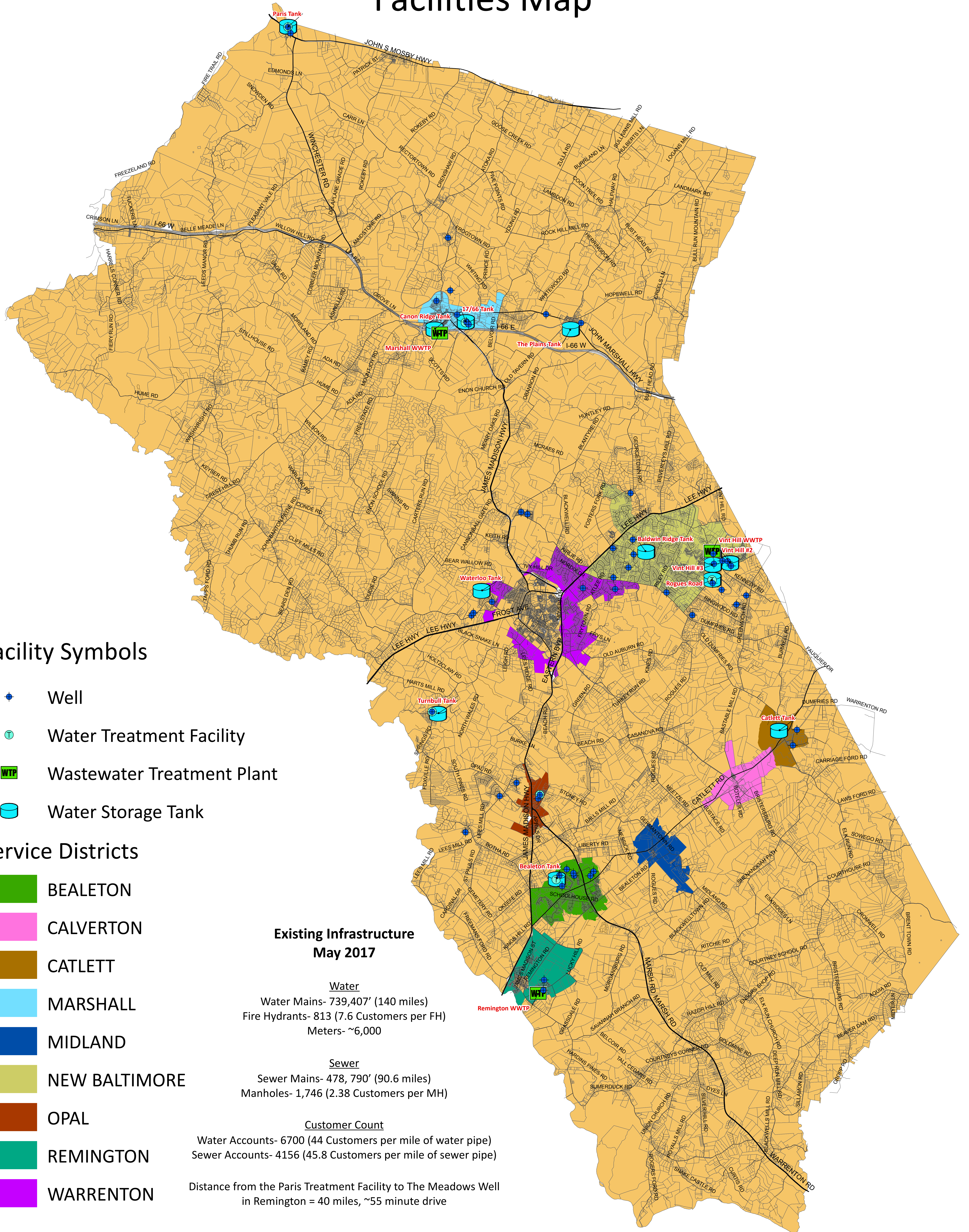
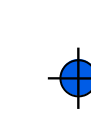
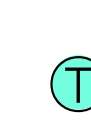

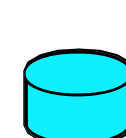


# Fauquier County Water and Sanitation Authority Facilities Map



## Facility Symbols

-  Well
-  Water Treatment Facility
-  Wastewater Treatment Plant
-  Water Storage Tank

## Service Districts

-  BEALETON
-  CALVERTON
-  CATLETT
-  MARSHALL
-  MIDLAND
-  NEW BALTIMORE
-  OPAL
-  REMINGTON
-  WARRENTON

### Existing Infrastructure May 2017

Water  
Water Mains- 739,407' (140 miles)  
Fire Hydrants- 813 (7.6 Customers per FH)  
Meters- ~6,000

Sewer  
Sewer Mains- 478, 790' (90.6 miles)  
Manholes- 1,746 (2.38 Customers per MH)

Customer Count  
Water Accounts- 6700 (44 Customers per mile of water pipe)  
Sewer Accounts- 4156 (45.8 Customers per mile of sewer pipe)

Distance from the Paris Treatment Facility to The Meadows Well  
in Remington = 40 miles, ~55 minute drive

